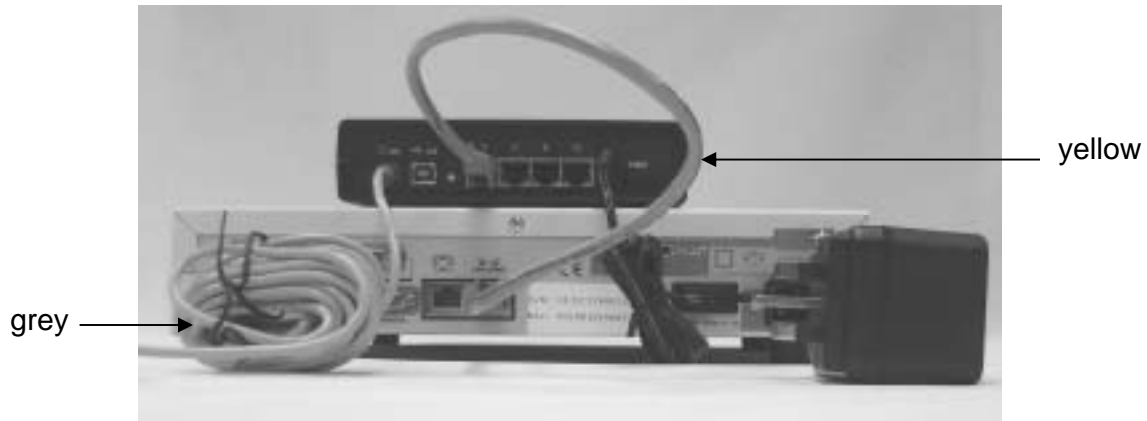


Tech Note for configuring of NetPilot and Westell router

1. Introduction and Physical Connection	2
2. Accessing the Westell's Getting Started Wizard	4
3. Configure Westell's firewall for use with NetPilot	7
4. Configure for use with DHCP.....	8
5. Configuring for use with Multiple Static IP addresses	9

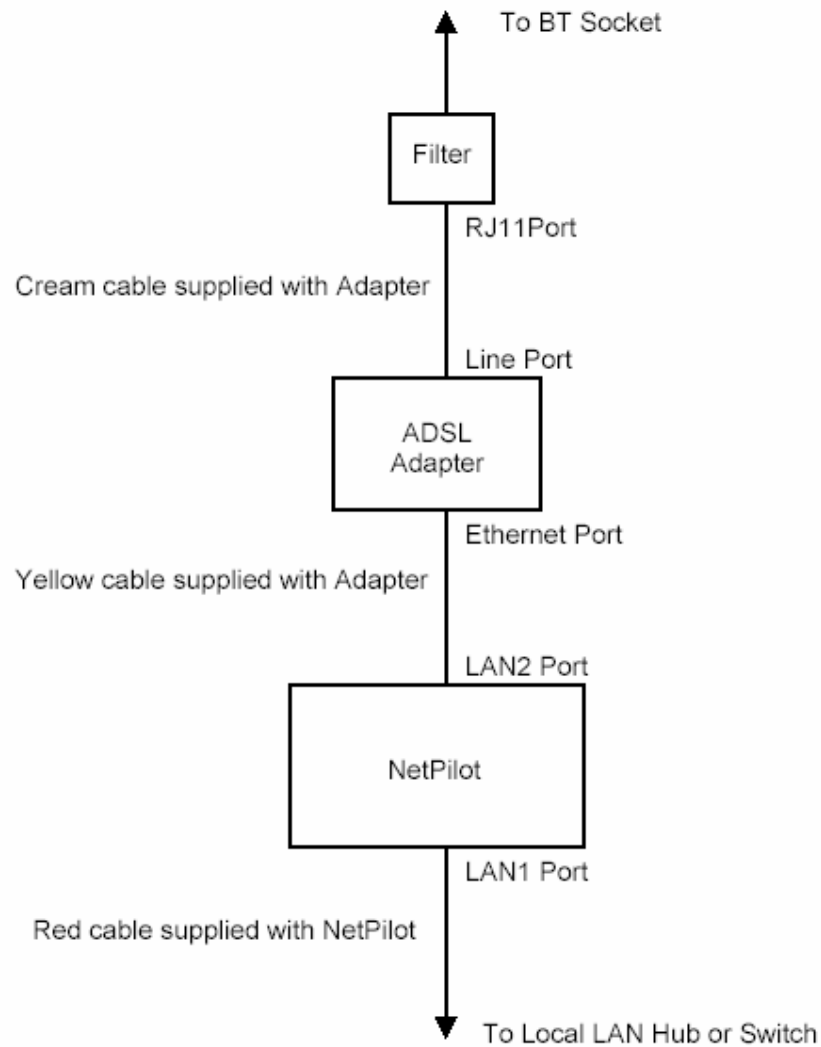
1. Introduction and Physical Connection



Connect the Westell ADSL router to the NetPilot using the Ethernet cable supplied with the router. This should be connected from the LAN 2 (WAN) port of the NetPilot to the Ethernet Port of the Westell unit.

The Westell ADSL router should be attached via the supplied cable and Filter to the ADSL.

Once you finished with the software set up of both units as described below please refer to the NetPilot's 'Getting Started' manual for information on how to connect the NetPilot to a hub/switch or a PC.



3.

Top Tip

Most problems encountered are physical cabling issues. Make sure you are using the correct cable – straight or crossed. Cable colouring conventions for NetPilot are:

- Blue – Straight normally used for Ethernet
- Red – Straight normally used for connecting to a hub or switch
- Yellow – Straight normally used for Router connectivity
- Green – Crossed cable used for connections directly to a PC

2. Accessing the Westell's Getting Started Wizard

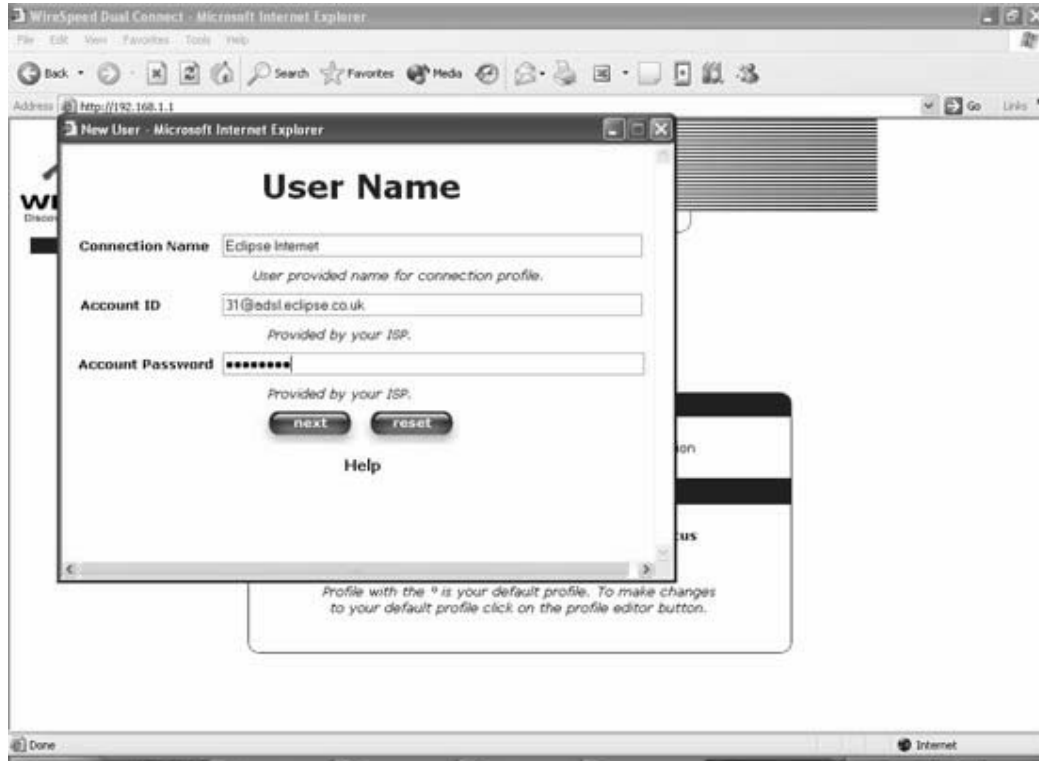
- For the initial software configuration of the Westell unit you will be required to plug your PC temporarily directly into the Ethernet port of the Westell router using a straight cable.
- If your PC is being configured from DHCP operation the router will automatically allocate your PC a suitable address. Alternatively manually allocate a suitable address such as 192.168.1.2 and point to gateway 192.168.1.1.
- Ensure no proxy settings are set on your browser
- Type `http://192.168.1.1` (the initial default address of the Westell router).
- You will see the initial Wizard Screen as below:

You will immediately be prompted with a **"Getting Started"** Wizard.



Click **Next**

Give the Connection a Name: Eclipse Internet (or any name you like)
Type the Account ID (ADSL Username supplied by your ISP):
Type the Account Password (ADSL Password supplied by your ISP):



After entering these details click **next**.

The Wizard will then display the Screens for VPI / VCI and Protocol – Keep the defaults.

VPI / VCI Default Settings

VPI (0 – 255)	0
VCI (1 – 65535)	38

Protocol Default Setting

Protocol	PPPoA
----------	--------------

When the Wizard has completed it will display the following screen:



When setup is complete, click done and you'll get returned to the Westell's Admin Home Page.

We now need to configure the Westell to always attempt to connect to the ADSL connection.

Click the "**Profile Editor**" button.



You will then be taken to the "**Connection Overview**" Screen.

Select the Connection "**Eclipse Internet**" in this case and you will then be prompted to confirm that you wish to change the Default Connection Profile – select **OK**.

Then click the "**Edit**" button.

Within the **Edit “Internet Connection”** Pop-Up Window, change the setting from **“Manual”** to **“Always On”**.

Then Select **“Save”**, you will again be prompted to **“Save Internet Connection”** click **OK** and the Pop-Up Window will close and return you to the **“Connection Overview”** Screen.

3. Configure Westell’s firewall for use with NetPilot

It is not recommended to use the Firewall that is built into the Westell, therefore you have to disable this option.

If this option is select we will not be able to access the NetPilot that is behind the Westell.



Select **“Configuration”** and select the option **“Firewall Configuration”** and select **“None”** A **“Do you wish to disable the Firewall”** Pop-Up window will appear – click **“OK”**.

You’ll then be returned to the **“Firewall Configuration”** page and the option **“None”** will be selected. NetPilot’s firewall will be used in preference.

4. Configure for use with DHCP

In the case your ISP has not provided you with a static IP address and your connection mode is relying on DHCP to give you a new IP address each time you connecting, you will have to configure the NetPilot and its LAN2 setting accordingly. You do not need to change any of the Westell settings, if you followed the set-up instructions as described above. Before you access the NetPilot connect it to the Westell Adaptor as described in Section 1 and reactivate your browsers proxy settings.

Access the NetPilot and go to Maintenance / Connectors section. Select the 'Ethernet cable/ADSL' profile from the drop down menu for LAN2. Click 'OK' and 'OK' again.



Once you changed the profile the NetPilot will pick up a private IP address from the Westell's Privat LAN DHCP server and you should be able to access the Internet.

5. Configuring for use with Multiple Static IP addresses

This mode assumes you have multiple fixed IP addresses to share between NetPilot and the ADSL Router, each with their own individual address.

Step 1: Disable Westell's DHCP Server

We first need to disable DHCP on the Westell, as by default they come pre-configured as a DHCP server.

Select "**Configuration**" and select the option "**DHCP Configuration**".

At the "**DHCP Configuration**" screen, where it displays "**DHCP Server**" change it to "**Off**" and click "**Save**". You will then be prompted to "**Save and Reconfigure DHCP**" click "**OK**".

You will be returned to the "**DHCP Configuration**" Screen.

Step 2: Configure Westell's DNS (recommended step)

Select "**Configuration**" and select the option "**DNS Configuration**".

Within the "**DNS Configuration Screen**" under the "**User Assigned DNS**" section, change the "**Domain Name**" to that of the customers e.g. equiint.com and then click "**Set**" click "**OK**" to "**Load new DNS Configuration**". (You will need to set up a domain name on the NetPilot later as well.)

Step 3: Configure Westell's Public LAN IP

We now have to configure the Westell for its Public LAN IP, this is the **First IP Address** supplied by the ISP.

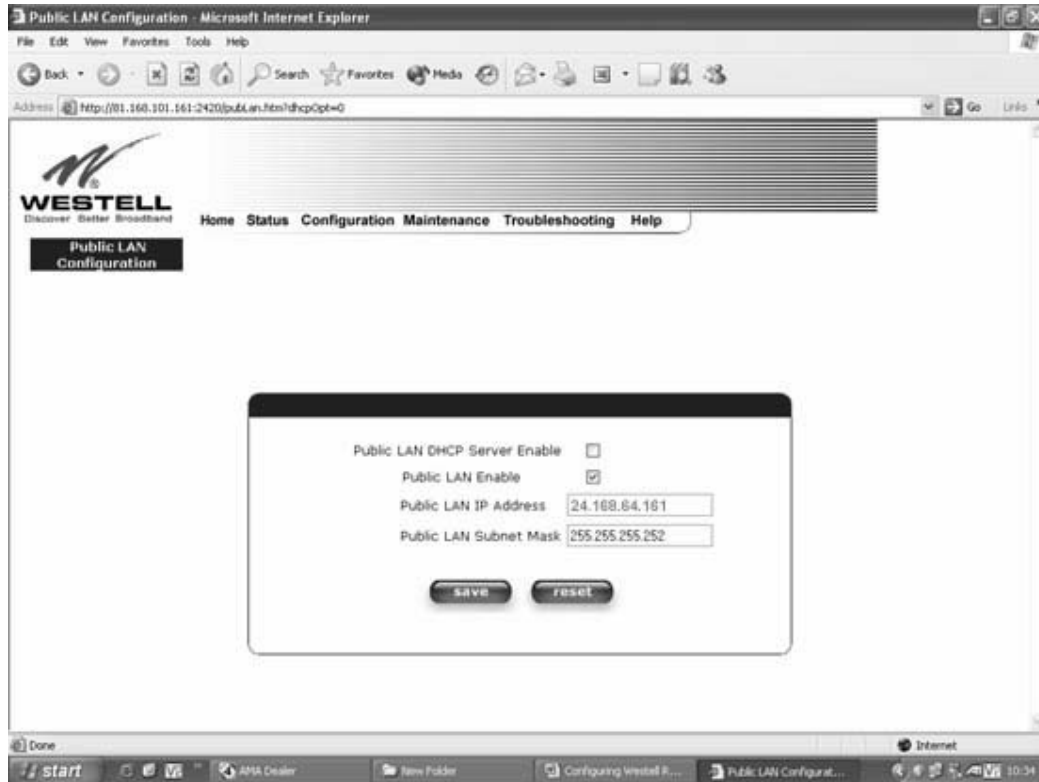
Select "**Configuration**" and select the option "**Public LAN Configuration**".

**DO NOT SELECT THE OPTION
Public LAN DHCP Server**

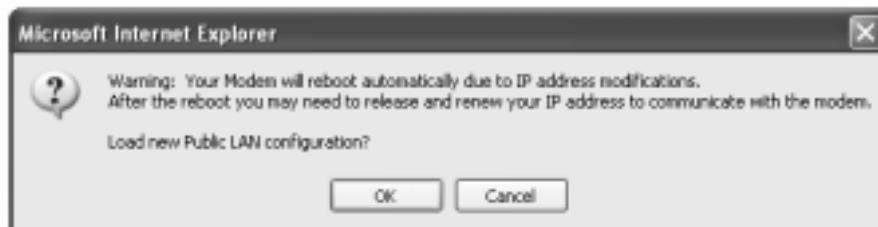
Tick the option "**Public LAN Enable**"

Type the Public LAN IP Address (First IP Address Provided by ISP):

Type the Public LAN Subnet Mask (Subnet Mask Provided by ISP):



Click **“Save”** and you will then be prompted with the following screen.



Click **“OK”** and the Westell will now reboot and you'll be returned to the Westell's homepage.

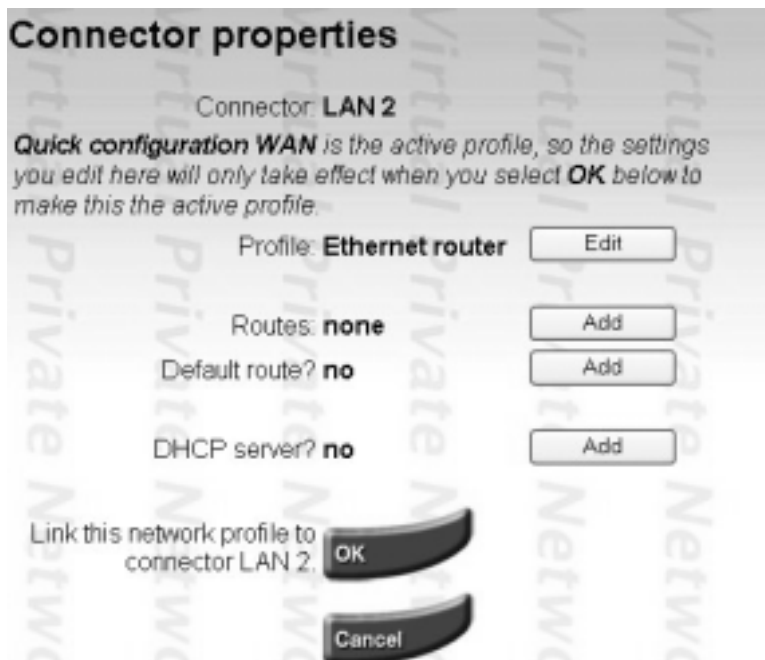
The Westell has now been configured, providing you have typed the ADSL Usernames & Passwords and the ADSL Line has been activated. When you plug the Westell into the ADSL Telephone line the **“Ready”** light should be permanently on.

Step 4: Configure the NetPilots LAN2 interface

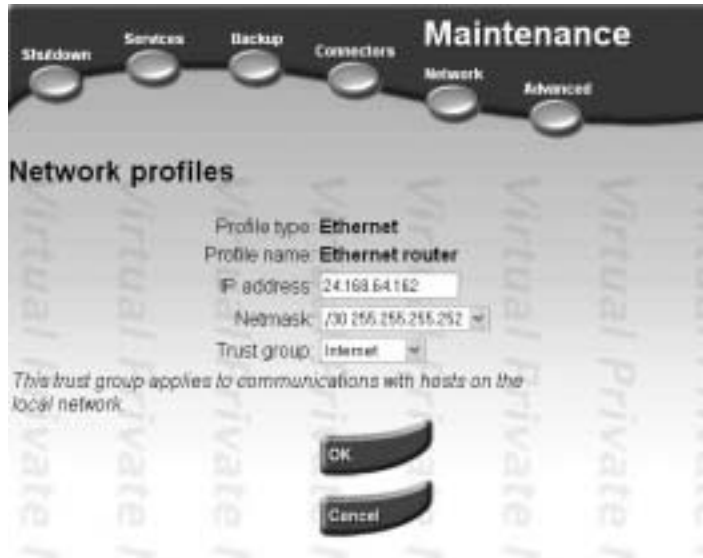
Connect the Westell router to the NetPilot as described in Section 1 and the PC to the NetPilot as described in NetPilot's manual. Access the NetPilot and go to Maintenance / Connectors. Select the 'Ethernet router' profile from the drop down menu for LAN2.



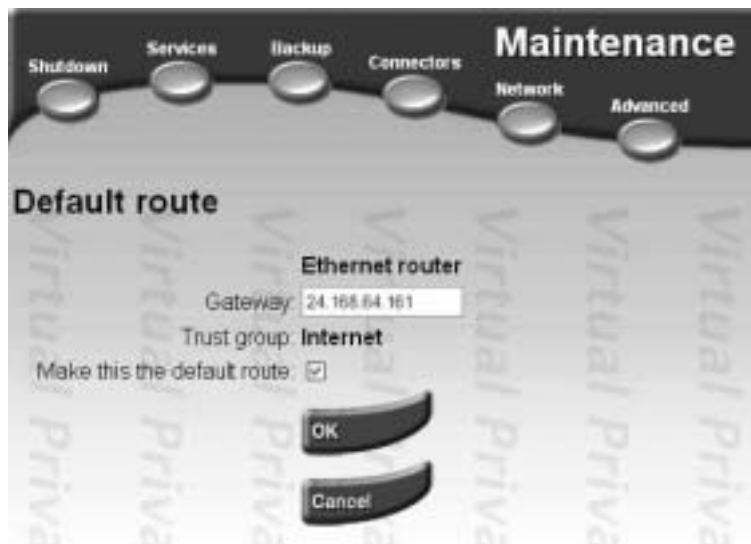
Click 'Edit' to progress to the 'Connectors Properties' section.



Access the **Ethernet Router Profile** option and enter the second fixed IP address provided to you by your ISP in the IP address field. Then select the require **Netmask** (as advised by ISP) and 'Internet' as the trust group.



Once you clicked 'OK' and 'OK' again to reconfirm, you will be taken back to the Connector Properties screen. Click '**Add**' next to the **Default Route** option and enter the IP you used previously as Westell's Public LAN IP Address as your **Gateway**.



Once you clicked 'OK' you will be taken back to the Connectors Properties screen, where you need to click 'OK' and 'OK' again to start your new settings.

You should now be able to access the Internet through the Westell router.