

## Chapter Twenty (g): Open VPN - RoadWarrior for System Administrator's

### Summary of Chapter:

- How to set-up an Open VPN Roadwarrior profile with a Vista machine.

### What you need:

- Admin user account and valid password for your Pilot.
- The PC you will be applying OpenVPN to needs to be set-up correctly and has access to the Internet.
- This PC will need Windows 2000, Windows XP or Windows Vista
- Please Download the Open VPN software to your computer from this link: <http://smartstore.equinet.net/index.asp?256697>
- Please use the excel Spreadsheet along side this Chapter to help you enter in the correct Virtual IP Address/es.

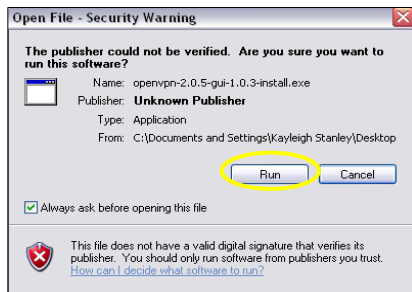
### Software Revision Required:

- Applicable to software revision 5.2.0 > NetPilots

(NetPilot will be referred to as 'Pilot'. All image examples are of a NetPilot.)

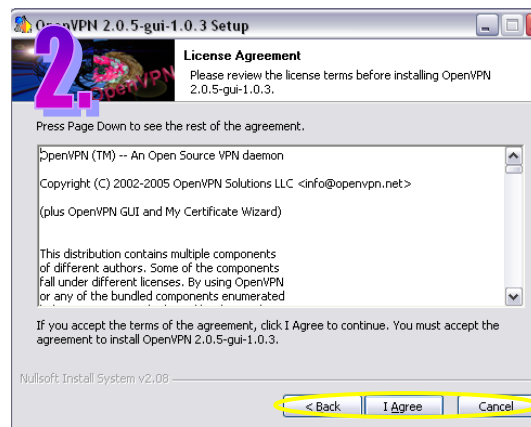
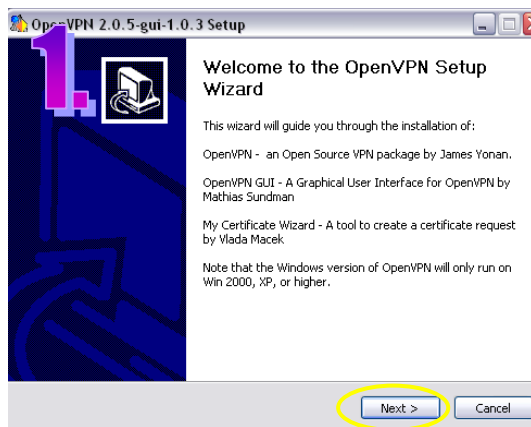
### Setting up the application:

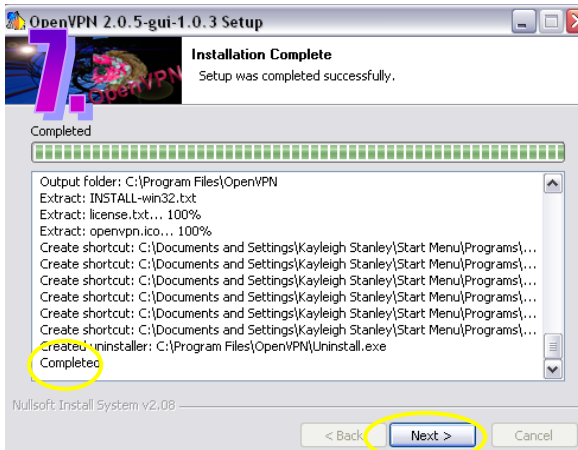
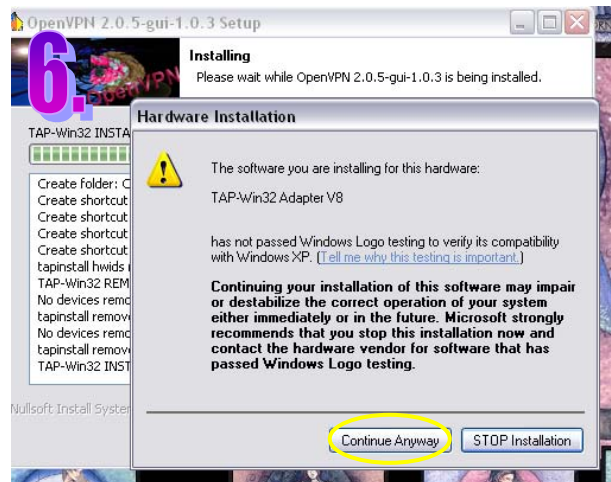
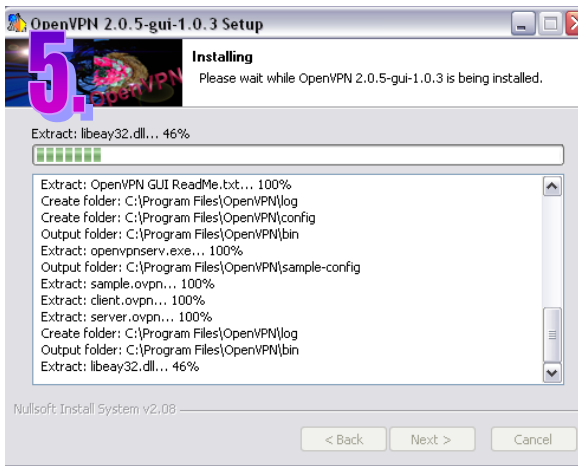
- When Downloading the Open VPN application from the SmartStore link above, please save it to your Desktop.
- Once the application has been downloaded please double-click the Open VPN icon.
- You will be presented with the window below:



- Select the 'Run' button, highlighted.

- The Wizard will open, please read all instructions and details carefully.
- The images below are in the order of what the Wizard will open and the buttons to select are highlighted after reading the details on each window:





After the Wizard Set-up of the application, you will now see a new icon appear in your icon tray. This icon, (shown right) is the Open VPN icon:



Please restart your PC for the application to work properly.

## Setting up Your Pilot:

Log on to the Pilot as shown in Chapter One (b).

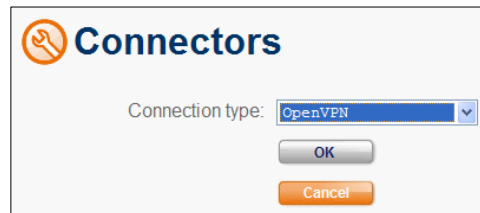
From the left-hand side of the screen, select 'Network' and then 'Connectors'. (All links are highlighted below).



You will be presented with the screen shown left.

Select the 'Add' button, highlighted.

You will see the screen below, select 'OpenVPN' from the drop down list and select the 'OK' button



**Tip!** Each RoadWarrior user will have their own configurations on their own profile. Each RoadWarrior profile can only have one active user assigned to it.

You will be presented with the screen below. Enter the following:



'Profile name': a profile name that is relevant to the individual user.


'Remote Gateway': If you know the individual will be coming in from a set IP address add this here. If not please leave Blank.

'Port': A Port number will automatically be selected for the profile.





**Information** If this port is being blocked by the PC's or any local firewall or device you will need to open up port 1194 UDP outgoing.

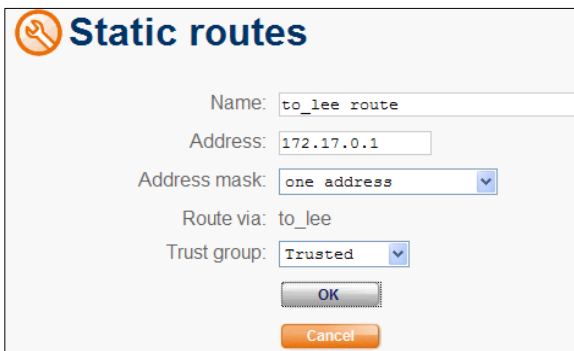
After you have entered the relevant details select 'OK'


 The next screen, which you will be presented with, is shown below:





 Select the first 'Add' button as highlighted left. This will allow you to add a Route.


 The Static Routes screen will be presented next. Enter the following:





 'Name': automatically filled in for you.


 'Address': the PC's virtual address. (This is explained in the table below)

 'Address Mask': Select 'One address'


 'Trust Group': while setting this up selected 'Trusted'. You can change the 'Trust Group' later to a more controlled Group, or one that you have created yourself for this individual to be applied to.

 To select the correct IP Address for the Static Route, you will need to select a set of Private Addresses that aren't used anywhere else on the Pilot.

 You will need to allocate four addresses to each user, starting the subnet from 0. The first and last of the four addresses are reserved and cannot be used. The second and third addresses can be used for the PC and Pilot.


 This table below shows three examples, (the highlighted IP Addresses can be used):

User	IP Address	Can or Cannot be Used	What it's used for
User 1	172.17.0.0	No	Network
	172.17.0.1	Yes	PC virtual address
	172.17.0.2	Yes	Pilot
	172.17.0.3	No	Broadcast
User 2	172.17.0.4	No	Network
	172.17.0.5	Yes	PC virtual address
	172.17.0.6	Yes	Pilot
	172.17.0.7	No	Broadcast
User 3	172.17.0.8	No	Network
	172.17.0.9	Yes	PC virtual address
	172.17.0.10	Yes	Pilot
	172.17.0.11	No	Broadcast


 After you have entered the correct details into the Static Route screen, select 'OK' and 'OK' again.




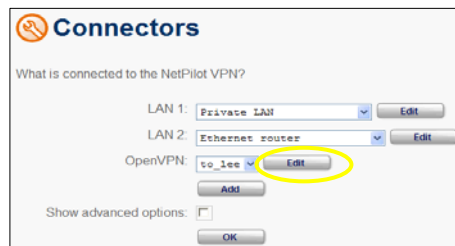
An extended version of the above table to edit is available on our SmartStore site.


 This will bring you back to the below screen:



 Select 'OK' and 'OK' again to confirm your settings.

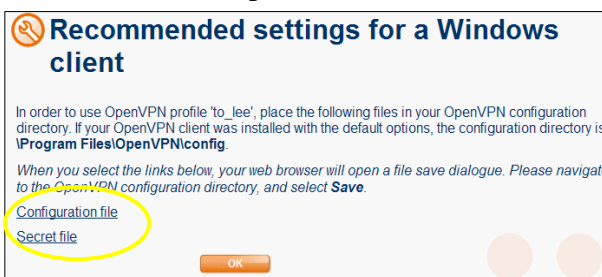
 When you return to the 'Connectors' screen below, select the 'Edit' button opposite the OpenVPN profile you have created, highlighted below:




 In the next screen, shown below, select the 'Show recommended settings for a Windows client', as highlighted:



 You will be presented with the below screen:

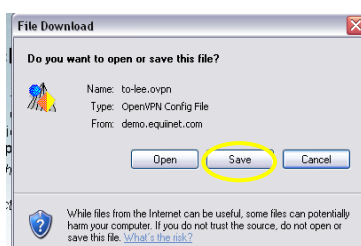



 Highlighted are the two files that you will need to save to the PC's hard-drive of the PC you want to allow remote access. Please save these files in the Directory stated on the screen.





**Tip!** If you cannot save the files to the PC now, you can transfer the files to the PC of your choice via USB etc.

 To save these files, double-click on the link, and the below window will appear:



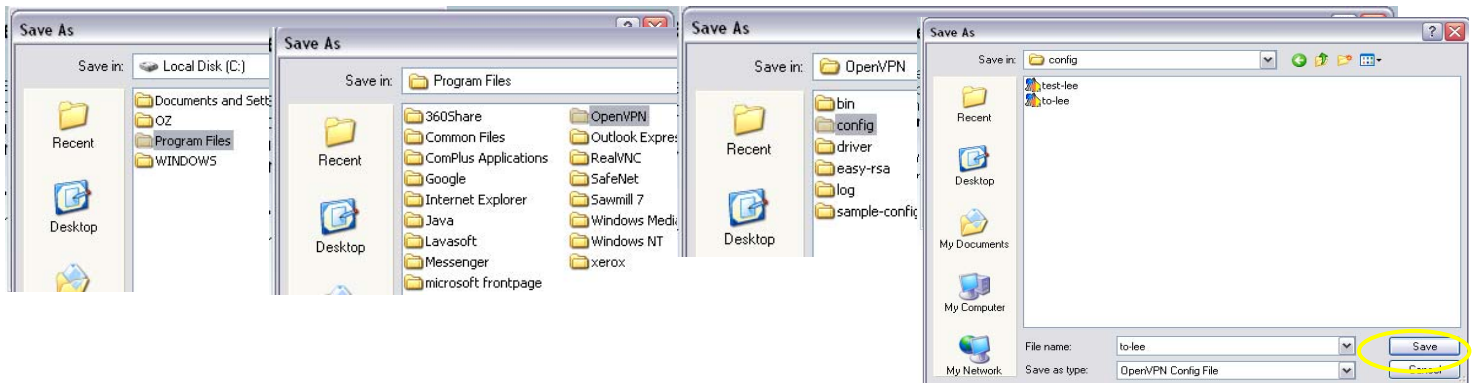
 Select the 'Save' button.

 When both files have been saved, select 'OK' and 'OK' again on the Pilot.

 Once these files are on the correct PC you will need to enter both of them into the below directory. This will apply them to the OpenVPN client.

1. Please follow the below to enter both of the files into the correct directory.

2. Select 'Local Disk (C:)' from 'My Computer', then 'Program Files', then 'OpenVPN', then 'config' and then select 'Save', to save the files in the 'config' folder.

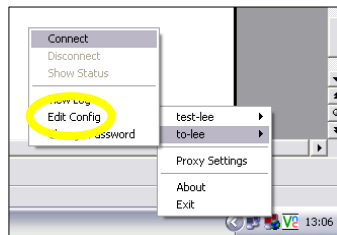


### Adding the "Vista" magic!:



If you do not have Vista please continue to the next section.

3. Right-click the OpenVPN icon in your taskbar and select a profile, in this profile select 'Edit Config'.



4. In the Config screen add the following two lines above the Static Routes:

```
route-method exe
route-delay 2
```

5. Save the changed Config file

6. In Vista, select 'Start', 'Settings', 'Control Panel'

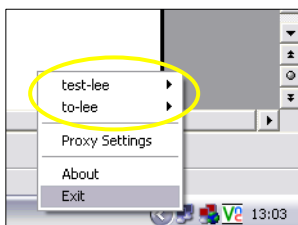
7. In 'Control Panel' select 'User Accounts'

8. Click on the 'Turn User Account Control on or off' Link

9. Untick the box given and select 'OK'.

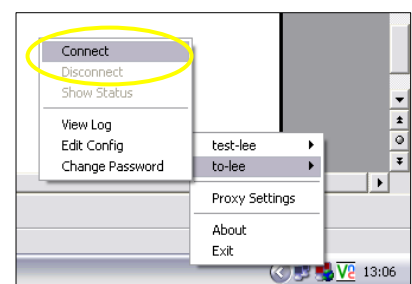
### Opening the OpenVPN connection:

10. To connect the profile, right-click the OpenVPN icon in the icon tray, as shown below:

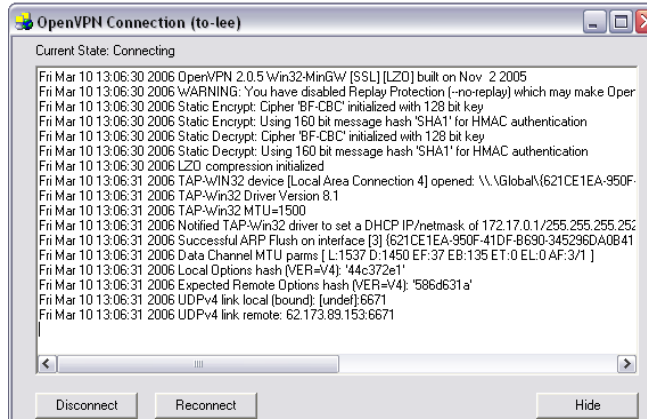



11. You will see the profile/s you've created.

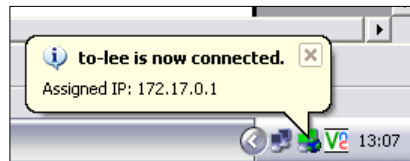
12. Select the profile you want from this menu, and then select 'Connect' as shown right.



 You will see the Application connecting:



 Once it has connected, the OpenVPN icon will turn green and a speech bubble will appear.

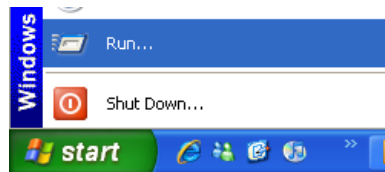



You will need to disconnect before shutting down your PC.

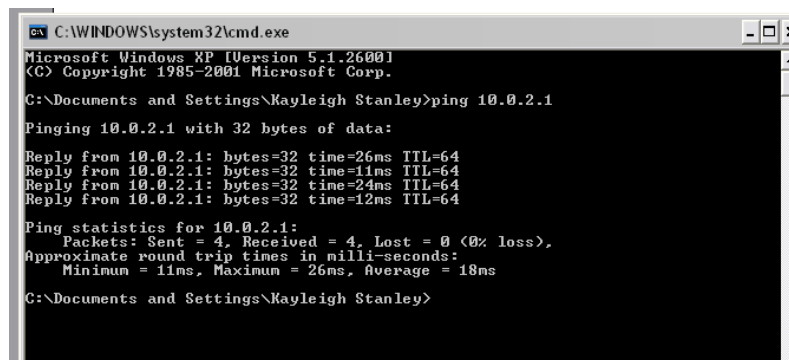



### Testing the Connection:


 Select 'Start' and then 'Run' as highlighted below:



 This will open a new window as shown below.



 Ping the LAN address of your Pilot, as shown left.

 As you can see the tunnel is established as a reply is received.



Do not connect while on a corporate network.

