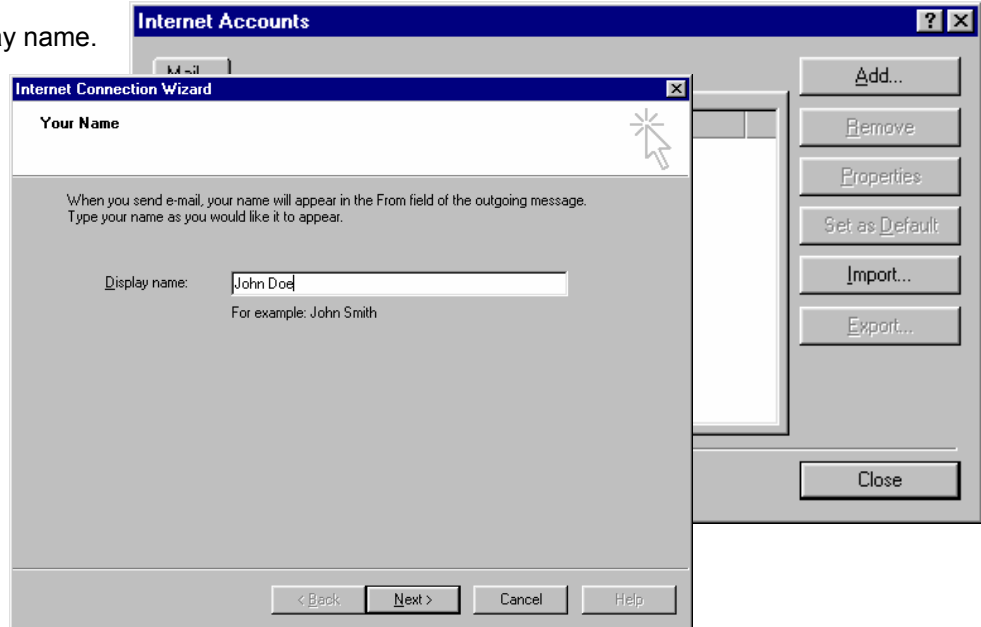


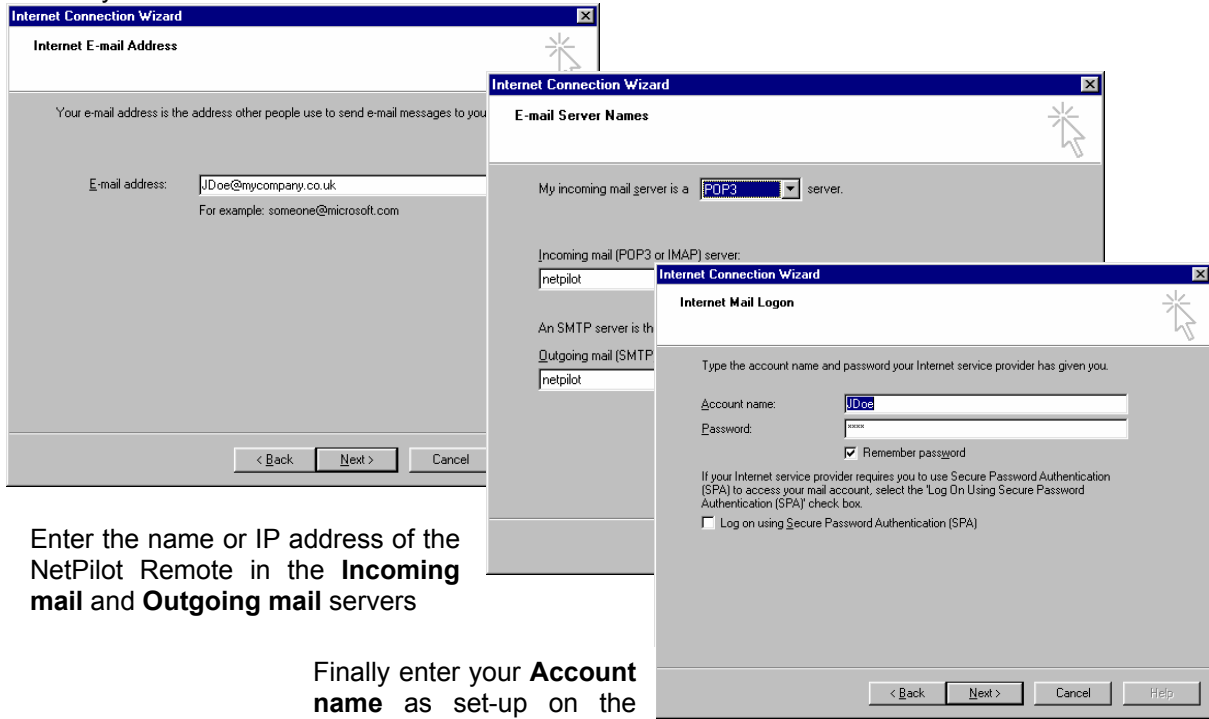
Configuring Windows Mail settings

In Windows go to **Start, Settings, Control Panel** and double click on the **Mail Icon**
In the **Internet accounts** dialog box, click the **Add** button

Now enter your display name.



Enter your email address



Enter the name or IP address of the **NetPilot Remote** in the **Incoming mail** and **Outgoing mail** servers

Finally enter your **Account name** as set-up on the **NetPilot Remote**, and your **Password**

Select the option to connect using the LAN.

