

## Configuring Windows Networking for NetPilot

Setting up the Microsoft Networking depends on whether you are using a fixed IP network or a DHCP server. With DHCP in use, you can configure the NetPilot to either act as the DHCP server or a client and take the services from another DHCP server elsewhere on your network.

### Using an existing DHCP server with NetPilot

If you are not using NetPilot for DHCP serving, but are relying on an existing server on your network, ensure that it is set-up to use the following settings.

- The IP address range should be the same as NetPilot. It is recommended that the NetPilot be issued a fixed IP address.
- WINS should be disabled.
- The gateway IP address of your DHCP server should be the NetPilot's LAN address.
- DNS should be enabled with a unique host name and the same domain name as set-up on NetPilot. Ensure NetPilot IP address is specified in DNS search order.

If your DHCP server is set-up as above then this information will be reflected in the client configuration once it has obtained its IP lease from the DHCP server. To check this, use **WINIPCFG** on Windows 95/98 or **IPCONFIG /all** from a command prompt on Windows 98/2000/NT/XP.



*The default NetPilot has an IP address of 10.0.0.1 with a subnet mask of 255.255.255.0 which is a class c network address that will support up to 254 client PCs.*

### Using NetPilot as a DHCP server

#### Windows 2000/XP

If you are using the NetPilot as a DHCP server then PC configuration is straightforward

- In the **control panel** double click on **Network Connection icon** and with right click select **Properties** for the adaptor that is bound to your Ethernet card.
- In the General tab select the option to **obtain an IP address automatically**
- Gateway should be left blank.
- DNS Configuration should be disabled.

#### Windows 98/Me

- In the **control panel** double click on **Network icon** select **properties** for the TCP/IP adaptor that is bound to your Ethernet card.
- In the IP Address tab select the option to **obtain an IP address automatically**
- WINS should be disabled.
- Gateway should be left blank.
- DNS Configuration should be disabled.

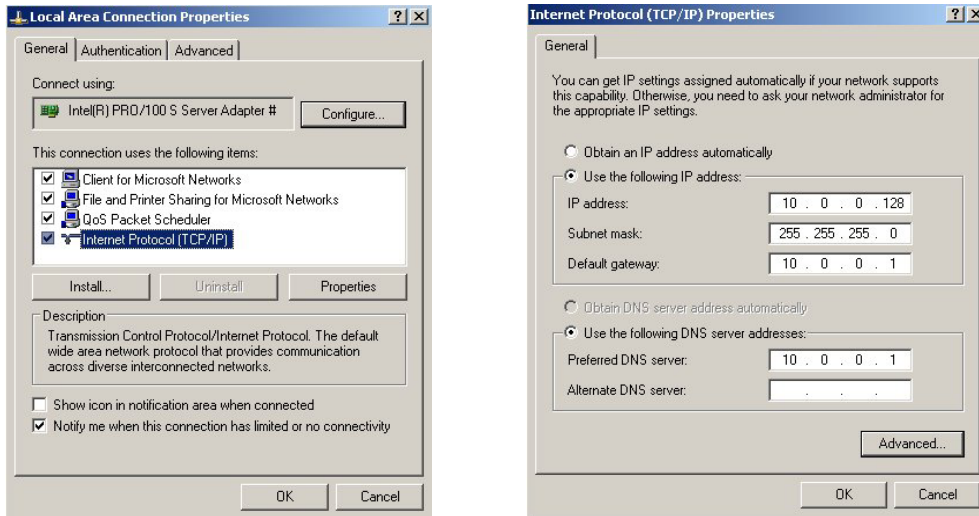
With the NetPilot as the DHCP server, it controls these settings. Running **winipcfg** on Windows 95/98 (and selecting **More info**), or **IPCONFIG /all** in Windows 98/NT/2000/XP will confirm this.

## Fixed IP network addresses

### Windows 2000/XP

In the **control panel** double click on **Network Connection icon** and with right click select **Properties** for the adaptor that is bound to your Ethernet card.

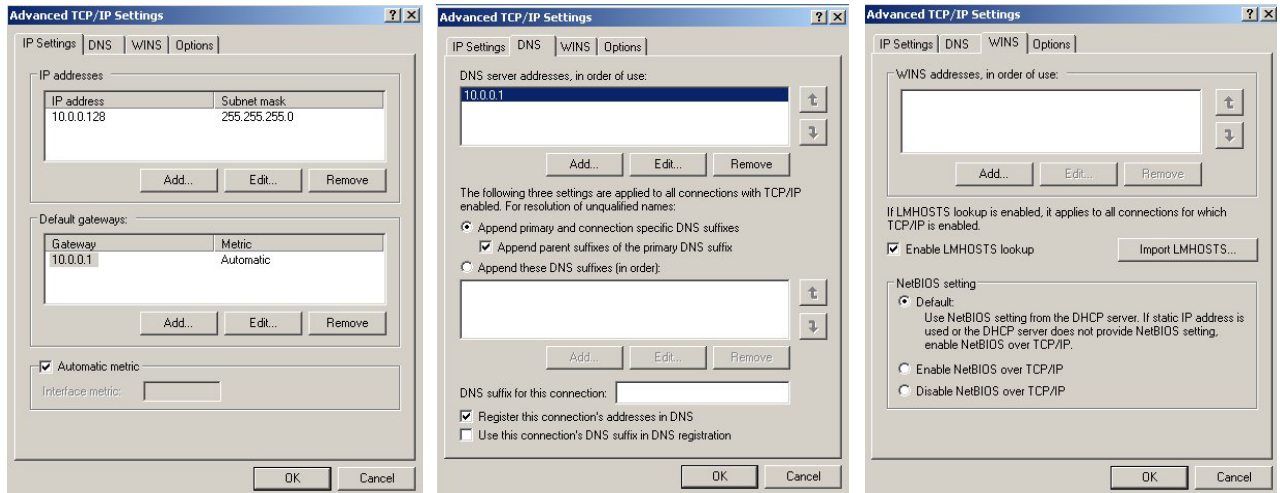
If you wish to use fixed IP addresses, select the **Properties** for the Internet Protocol (TCP/IP)



In the General address tab choose **use the following IP address** and enter a unique IP address on the same network as the NetPilot and the network's subnet mask.

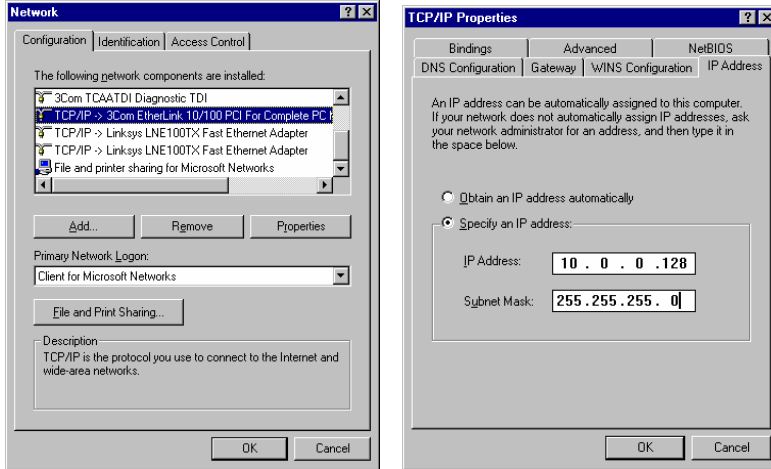
In the **Default Gateway** you need to specify the IP address for the NetPilot.

Next enable DNS by choosing Use the following DNS server address and add the NetPilot's IP address. You can change and add to your configuration by clicking on Advanced and selecting one of the screens below.

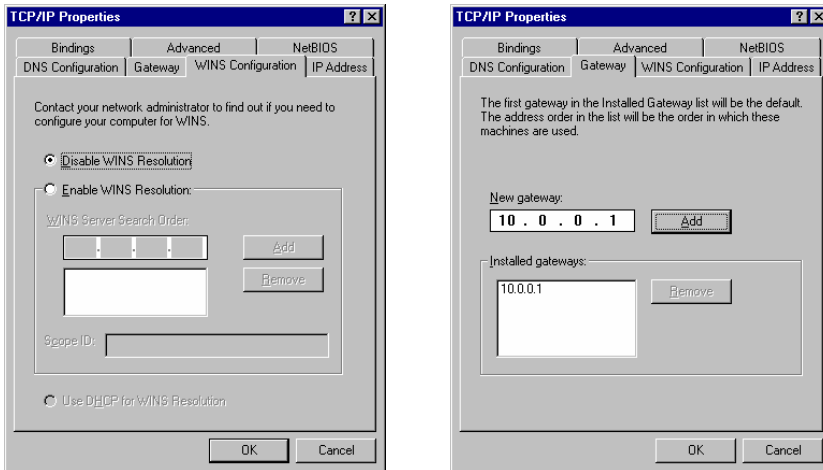


**Windows 98/Me**

Select the **Properties** tab for the adaptor that is bound to your Ethernet card.

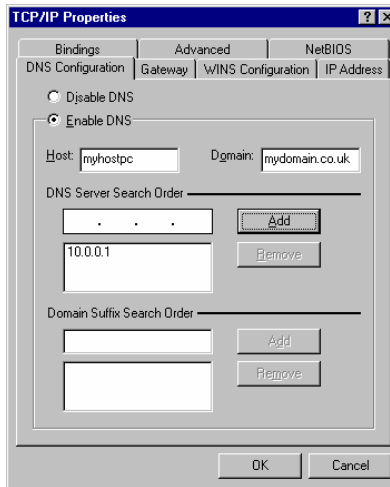


In the IP address tab choose **specify IP address** and enter a unique IP address on the same network as the NetPilot.



In the **WINS configuration** tab **Disable WINS Resolution** should be selected.

In the **Gateway** tab you need to specify the IP address for the NetPilot under **New gateway**.



Under **DNS Configuration** select **Enable DNS** and enter a unique **host** name (this can be the same as the machine name) and enter the same **domain name** (this is the extension that normally follows after the @ sign in your email address) as set on the NetPilot in the domain field. The IP address for the NetPilot should be added to the **DNS Server Search Order** box.